

Lopi™

Freestanding Wood Heaters



FEATURING
GREEN  **START™** **HYBRID**  **FYRE™**

Lopi™ America's Favourite Fire

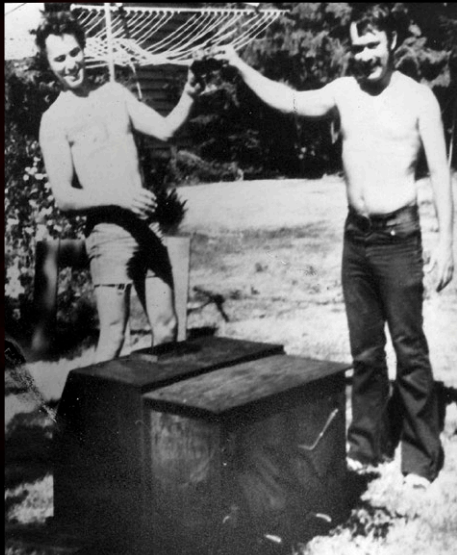
Lopi wood heaters and inserts have been America's favourite choice in fire for over thirty years. Our reputation for solid craftsmanship, reliable performance and unbeatable heating efficiency has been a winning combination year after year, and the favourite fire of families across the nation.

Lopi heating appliances are designed and hand-assembled at our state-of-the-art plant in Mukilteo, Washington. Each stove comes with a five or seven year warranty.

After all, we have the experience and confidence to stand behind every single product we make, so we put it in writing.

We've learned and grown with every stove we've built over the years but one thing that hasn't changed is the beauty of our stoves and inserts, performance you can trust and our commitment to your satisfaction.

Whether you are new to the family of Lopi heating appliances or already a part of our family, we invite you to take a look at our newest line of wood heaters and inserts. We know you'll find your favourite fire.



1979 - First Lopi Wood Heater

HOW DO YOU SAY LOPI?

We hear a lot of different pronunciations

- Lopey...Loopee...Loppy!

It's actually pronounced Low-pie,

and was created by our president,

Kurt Rumens.

The name was inspired by a love of the

Northwest, a fascination with Native

American culture and the nature and

wildlife that live in this beautiful place.

Lopi means beauty, strength and

independence and has become a legend

all its own.

Why Buy A Freestanding Lopi Wood Heater?

Energy Independence

The expense of heating your home with oil, gas or electricity just keeps going up. Lopi's radiant and convective freestanding wood heaters give you even, penetrating heat that comfortably warms every room in your home for a fraction of what you'd pay for standard utilities.

Care For The Environment

Did you know an old, inefficient wood heater can generate as much as three pounds of pollutants into the air each day? Lopi wood heaters are E.P.A. certified and emit as little as 1.3 grams of particulates per hour, thus reducing pollutants by over 95 percent. By using a Lopi wood heater, you're keeping the air in your neighbourhood clean and breathable. Wood is a renewable resource, Lopi wood heaters are so efficient they use substantially less wood than other heaters to get the same amount of heat output.

Built To Perform, Built To Last

Lopi offers the choice of the mid-priced Republic line of freestanding radiant wood heaters and the high performance Classic line-up of Lopi wood stoves that includes a high performance convection chamber as a standard feature and are the only non-catalytic stoves to feature a standard bypass damper for smokeless startup and reloading. With heavy gauge steel construction, solid air-tight doors and commercial grade firebricks, our wood heaters are built to last a lifetime.

No Power? No Problem!

Lopi wood heaters provide reliable heat even during power outages and don't need blowers to operate. So you'll be warm and cosy no matter what's going on outside. Many of our models have cooking surfaces so you can warm soup or cider or fry bacon and eggs for breakfast!

A Warmth Like No Other

Wood heat soothes and radiates and nothing does it better than a Lopi wood heater. Most wood heaters give off radiant heat that only warms objects within the room. Lopi's five-sided convection chamber system circulates air around the stove and then pushes the warm air through the room to other areas of your home. It's a difference you can feel.



We Build The Finest Wood Heaters On The Planet

No other wood heater can surpass Lopi's performance or quality.

It takes the best engineers and craftsmen to make the best wood heaters, and we've got them. Your new Lopi heater features true unibody construction and the most durable door on the market. The Lopi door is held in place with cold-rolled steel punched through the firebox and welded on the inside to hold the door permanently straight. The hinge pins that hold the door are 16mm bridge rivets. Your stove also has a six-inch, seamless, heavy-duty steel flue collar and heavy gauge 9.5mm & 6mm steel construction. When you buy a Lopi, you're buying the finest, **'We guarantee it.'**



The solid brass door will last for life (unlike the micro-thin gold plating common to many other stove brands).

Pewter doors are also available on most stoves and inserts.



Cast iron frame glass retainer insures a permanent air-tight seal around the glass.

The cast iron frame fits an inch deep inside the door, so the door will never warp or flex. The frame also protects the glass gasketing from direct contact with the fire.



Our single air control is easier to fine tune to your heating needs by regulating both primary and secondary air to the stove.

The control is spring loaded to insure an engineered seal to the bottom of the firebox.

The result is a sealed air control which will not allow any additional air into the firebox.



Lopi uses real kiln-fired, refractory fire brick in the firebox and baffle.

This is the same material used to line commercial boilers and furnaces. This brick is heavy and made to last.

7-Year "Real World" Warranty

Our 7-Year Warranty offers more protection on key components than the so-called "Lifetime" warranties of our competitors.

When purchased from your local Lopi specialist dealer we cover all electrical (blowers) for 2 years and all parts (with labour) for 5 years, and parts for an additional 2 years. That's because Lopi builds stoves to last a lifetime.

We'll stand behind the quality and performance of our products year after year because that's the way we do business --and you don't have to read the fine print for your peace of mind.



Some Lopi models feature a by-pass damper that prevents smoke-backs while starting and reloading and assisting in a quicker start-up.

Freestanding Options & Accessories



DOORS

Choose from three door finishes to blend or accent your heater and room decor.
Solid Brass, Black Painted, Pewter Plated
 (Not available for Republics or Cape Cod)



ELK ETCHED GLASS

Bring the great outdoors inside with the decorative elk etched glass design.
 (Not available for Republics or Cape Cod)

CHOICE OF PEDESTAL OR FOUR DECORATIVE LEG CHOICES*

Available for the Republic*, Answer, Endeavour and Liberty freestanding stoves.

Pedestal Option in lieu of legs



*Republic 1250 / 1750
 Pedestal or black legs only



Sculptured
 Pewter Finish



Sculptured
 Black Steel



Cape Cod - Ships with it's own style of legs
 only - no leg or pedestal options



Cast Brass



Cast Black

FREESTANDING FAN

(Installs at the back of unit)

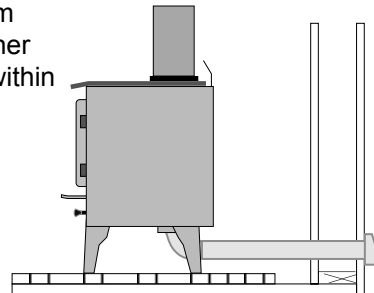


CONVECTION FANS

Thermostatically Controlled
 High on power but low on noise.
 They help circulate heat by moving up
 to 160 cubic feet of air per minute.
 (Fans are standard on the Cape Cod)

OUTSIDE AIR KIT

Improve the air quality in your home by
 adding the optional Outside Air Kit to draw
 oxygen from
 outside rather
 than from within
 your room.



Travis Industries - Mukilteo, Washington USA





The Revolutionary GreenStart™ Igniter Option

Starting your wood heater has never been easier.

Much like Charles Kettering's invention of the electric automobile ignition 100 years ago, the GreenStart igniter system has evolved the ignition of fire in a spectacular way and has become the greatest innovation in wood heating in over 100 years.

Starting a fire in your wood heater is now as convenient as pushing a button. No longer is the mess of starting a fire with matches and newspapers a concern as it has been eliminated entirely by this breakthrough new igniter system.

Fireplace safety has increased, as well as there is no longer a need to leave doors ajar to promote the fire start up. The GreenStart system works much like a blacksmith bellows. A compressor forces 760 degree celcius preheated air into the firebox directly onto the wood source giving a clean fast smoke-free start up.

This combination of the igniter and bellows is the brilliance of this patented design. This system is also ideal for refreshing old fires as well by simply adding new fuel on top of the old coals, closing the door and pushing the button two times. This activates the bellows without activating the ignitor. The bellows will run for 7 minutes, enough time to rekindle the fire.

The new GreenStart system instantly elevates combustion temperatures within your wood heater, immediately establishes a draft and eliminates the slow and smoky typical wood fireplace start up.

The GreenStart Igniter system will start wood burning within a minute. After the initial start up the blower will continue pumping air at various speeds like a bellows into the fire greatly accelerating the start up time. After 15 minutes the blower shuts off.

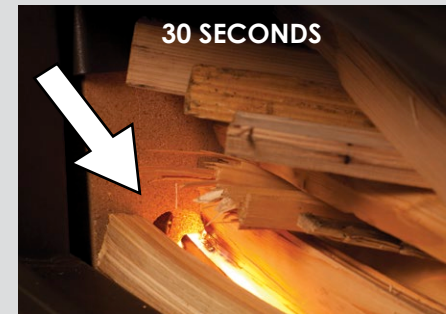
For best results dry, seasoned wood is required when using the GreenStart system. Never before has starting a fire in a wood stove or insert been so simple.

How GreenStart™ Works

Push a Button



Start Your Fire



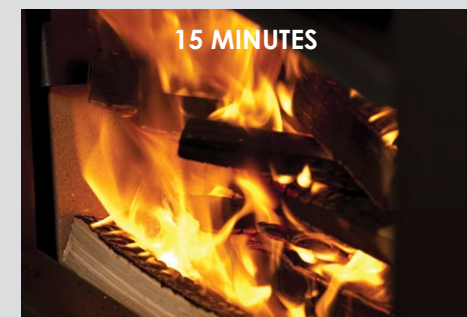
Hot surface igniter blows 760 degree celcius heated air into firebox igniting the wood



Igniter shuts down and blower continues to push air acting as bellows to fan the fire



Blower continues to fan the fire at various speeds to deliver proper draft in chimney and vigorous fire



Blower shuts down. Homeowner adjusts damper and air controls to maintain fire

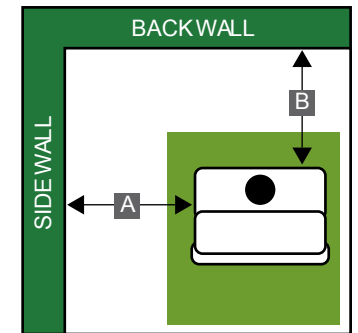
Freestanding Wood Heater Specifications

SPECIFICATIONS	Republic 1250	Republic 1750	Answer	Evergreen	Endeavor	Liberty	Cape Cod
Width (mm)	600	600	600	712	610	762	821
Height (legs) (mm)	673	673	708	N/A	740	816	889
Height (pedestal) (mm)	778	778	810	851	880	918	N/A
Depth (mm)	412	597	454	515	638	565	552
Flue Size (mm)	152	152	152	152	152	152	152
Construction (Plate Steel)	9.5 to 6mm	9.5 to 6mm	9.5 to 6mm	6.35 to 4.75mm	9.5 to 6mm	9.5 to 6mm	Cast Iron
Weight (with legs) KG	136	203	136	204	203	213	267

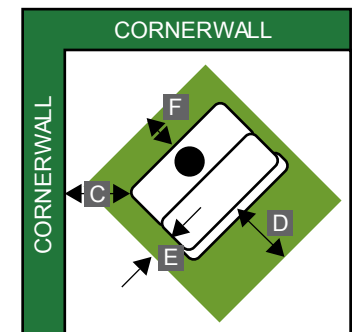
PERFORMANCE	Republic 1250	Republic 1750	Answer	Evergreen	Endeavor	Liberty	Cape Cod
Heating Capacity (Up to in Sq mtr)	160	220	180	250	250	300	300
Emmissions (g/Kg)	1.5	2.3	1.5	0.8	2.3	2.5	1.3
Efficiency (Up to)	72%	61%	72%	65%	61%	63.7%	83%
Maximum Burn Time (Up to)	8hrs	10hrs	8hrs	10hrs	10hrs	12hrs	12hrs
Firebox Size (Cubic/Mtr)	.05	.06	.05	.062	.06	.09	.085
Maximum Log Size (mm)	457	495	457	520	495	610	610

CLEARANCES	Republic 1250	Republic 1750	Answer	Evergreen	Endeavor	Liberty	Cape Cod
	With Flue Shield	With Flue Shield	With Flue Shield	With Flue Shield	With Flue Shield	With Flue Shield	With Flue Shield
A = Heater to Side Wall (mm)	500	350	325	325	350	425	450
B = Heater to Back Wall (mm)	200	150	200	200	150	175	200
C = Heater to Corner Wall (mm)	150	150	150	100	150	150	250
HEARTH							
D = Front (mm)	300	300	300	300	300	300	420
E = Sides (mm)	200	200	200	200	200	200	150
F = Back (mm)	152	152	152	200	152	152	200

STRAIGHT WALL INSTALLATION



CORNERWALL INSTALLATION



*Clearances to combustible materials are according to heater test results using a standard triple skin flue kit, (AS/NZS 2918:2001) fitted with 1 length of 900mm deco mesh with included heat shield or 1 length of 900mm x 180 ° stainless steel heat shield as a minimum. Any further enquiries please call Dragon Wholesaling Pty Ltd on 1800 064 234 Always refer to the relevant installation manual to confirm clearances. All information available at www.lopi.com.au



Republic 1250

Experience the performance and quality you've come to expect in Lopi wood heaters in two mid-priced economy models. Without compromising construction or function, Lopi has produced the Republic wood heater line that's designed to be affordable, good looking and just plain heats.

The economically priced Republic™ 1250 is designed to heat smaller homes or for zonal heating specific areas or rooms. Features include large radiant heat transfer surfaces, fully lined ceramic brick firebox, heavy-duty steel construction, and the option of either steel legs or pedestal.

Options: Convection Fan, Choice of Steel Legs or Pedestal Outside Air Kit

Republic 1250 Specifications

Emissions	Heating Capacity	Max Burn Time	Efficiency
1.5 g/Kg Per Hr	Up to 160sqm	Up to 8 Hours	Up to 72%
Firebox Size	Max Log Size	Weight	Construction
.05 Cubic Mtr	457mm	136Kg (with legs)	9.5 - 6mm Steel Plate



Republic 1250
with Pedestal Option

WHY HEAT WITH WOOD?

Nothing heats like wood. Lopi wood stoves and fireplace inserts warm the coldest days, brighten the darkest nights and fill your home with the gentle, radiant heat only wood can produce. With styles and installation choices for every room in your home, America's favourite fire helps you declare yourself free from high heating bills.



Lopi Republic 1750 Shown with black cast door and steel legs.



Republic 1750

The Republic™ 1750 wood stove offers the classic Lopi look with a radiant surface for cooking and a convection surface for warming, and it packs a powerful punch.

Its ceramic brick lined firebox is larger than most small stoves. To get heat to the room, the Republic 1750 uses a rear and top convection chamber to enhance warm air circulation throughout your home. This provides more even heat than you get with a radiant-only wood stove. The economically priced Republic 1750 is ideal for mid-sized homes and for zonal heating specific areas of larger homes.

Options: Convection Fan , Choice of Steel Legs or Pedestal Outside Air Kit

Republic 1750 Specifications

Emissions	Heating Capacity	Max Burn Time	Efficiency
2.3 g/Kg Per Hr	Up to 220sqm	Up to 10 Hours	Up to 61%
Firebox Size	Max Log Size	Weight	Construction
.06 Cubic Mtr	495mm	203Kg (with legs)	9.5 - 6mm Steel Plate



Republic 1750
with Pedestal Option



Lopi Answer - Shown with pewter door and black steel legs



Answer

It may be small, but the compact Answer's size belies its incredible heating capacity.

The Answer uses a five-sided convection chamber to distribute heat evenly throughout your home. Cool room air is naturally drawn around the hot firebox, heated, and returned back into the room without using a blower.

The Answer's .05 cubic metre firebox is larger than most other small stoves, so it offers longer burn times with less reloading. It's a powerful heater for its size, yet the back wall clearance is just 200mm to a combustible surface

Options: *Doors, Legs, Pedestal, Convection Fan, Etched Glass, GreenStart™, Outside Air Kit*

Answer Specifications

Emissions	Heating Capacity	Max Burn Time	Efficiency
1.5 g/Kg Per Hr	Up to 180sqm	Up to 8 Hours	Up to 72%
Firebox Size	Max Log Size	Weight	Construction
.05 Cubic Mtr	457mm	136Kg (with legs)	9.5 - 6mm Steel Plate



GREEN START™

AVAILABLE - SEE PAGE 6 FOR DETAILS

Answer Shown with Optional Pedestal & Brass Door



Evergreen

The mid-sized Evergreen wood stove with its gentle curved lines complements any home's décor while artfully presenting heavy gauge steel Unibody construction and a cast iron door. The result is exquisite and reliable heating for decades to come.

With the standard bypass damper we've given you full control over the flow of smoke inside your Evergreen. Simply open the bypass via the pull ring located just above the door to draw smoke away from the door and up the chimney. Close the damper to drive smoke around the baffle and initiate the efficient secondary combustion process.

Your burn rate, from a mellow overnight burn to a large rolling fire, is effortlessly managed by a single air control knob found below the stove's door.

Options: *GreenStart™, Outside Air Kit*

Evergreen Specifications

Emissions	Heating Capacity	Max Burn Time	Efficiency
0.8 g/Kg Per Hr	Up to 250sqm	Up to 10 Hours	Up to 65%
Firebox Size	Max Log Size	Weight	Construction
.062 Cubic Mtr	520mm	204Kg (with pedestal)	9.5 - 6mm Steel Plate



Standard Ash Pan
A large capacity ash pan is included into the design with the Evergreen. Simply sweep ash from inside the stove down through the Ash Pan Access Ports (two holes at the bottom of the firebox).
The large capacity ash-pan = LESS CLEANING!

Lopi Evergreen - With Pedestal



GREEN START™

AVAILABLE - SEE PAGE 6 FOR DETAILS



Lopi Endeavor - Shown with black cast door and cast legs



Endeavor

The Endeavor is a beautiful workhorse that unites form and function into an unbeatable heat transfer system.

Its classic step-top design features a radiant surface for cooking, and a convection surface for warming. It has the biggest and cleanest-burning firebox of any medium-size stove.

The Endeavor also features a taller door opening than any other medium-size stove, allowing you to load bigger pieces of wood and produce longer burn times. In addition, a by-pass damper prevents smoke-backs while starting and reloading.

Options: Doors, Legs, Pedestal, Convection Fan, Etched Glass, GreenStart™, Outside Air Kit

Endeavor Specifications

Emissions	Heating Capacity	Max Burn Time	Efficiency
2.3 g/Kg Per Hr	Up to 250sqm	Up to 10 Hours	Up to 61%
Firebox Size	Max Log Size	Weight	Construction
.06 Cubic Mtr	495mm	203Kg (with legs)	9.5 - 6mm Steel Plate



GREEN START™

AVAILABLE - SEE PAGE 6 FOR DETAILS

Endeavor Shown with Optional Pedestal & Brass Door

WOOD HEAT IS GOOD HEAT!

All wood stoves manufactured by Lopi are certified by the EPA and are designed to emit only a fraction of the smoke that older, non-certified stoves produced. Burning wood emits no more carbon dioxide into the environment than would normally be produced from the same wood if left to decay in the forest. You can feel confident to know that burning wood is truly Carbon Neutral to the environment and a responsible and sustainable way to heat your home.



Liberty

The Liberty is the largest stove made by Lopi, and has the biggest firebox of any large stove, which accepts 24 inch (610mm) logs. It also features a single control to adjust air flow, making it easy to achieve burn times up to 12 hours long.

The Liberty's step-top design is enchanting yet functional, providing cooking and warming surfaces as well as radiant heat. The viewing area is extra-large, allowing you to fully appreciate the splendour of the fire inside. The Liberty uses a 152mm diameter flue and features a by-pass damper that prevents smoke-backs while starting and reloading.

Options: Doors, Legs, Pedestal, Convection Fan, Etched Glass, GreenStart™, Outside Air Kit

Liberty Specifications

Emissions	Heating Capacity	Max Burn Time	Efficiency
2.5 g/Kg Per Hr	Up to 300sqm	Up to 12 Hours	Up to 63.7%
Firebox Size	Max Log Size	Weight	Construction
.09 Cubic Mtr	610mm	213Kg (with legs)	9.5 - 6mm Steel Plate



GREEN START™

AVAILABLE - SEE PAGE 6 FOR DETAILS

Liberty Shown with Optional
Pewter Legs & Pewter Door

Lopi Liberty - Shown with pewter door and black steel legs



Cape Cod **HYBRID Fyre™**

Lopi is excited to introduce the Cape Cod as the world's cleanest burning, large .085 cubic metre firebox, cast iron stove. The Cape Cod features elevated craftsmanship and Lopi styling as well as cutting edge Hybrid-Fyre™ technology.

The combination of Lopi's advanced secondary combustion with post combustor assists in what creates this unique and ultra efficient Hybrid-Fyre™ technology.

The Cape Cod is a unique cast iron wood stove as it features a full convection chamber surrounding the firebox. Room air is drawn through the back convection chamber then circulated through the convection channel where it is heated. This hot air is then expelled from the top convection chamber through natural convection increasing the temperature of the room. Additionally, a high performance 400 cfm fan pushes convection air through the stove greatly improving heat transfer and air circulation into the room.

Options: *GreenStart™, Outside Air Kit*

Cape Cod Specifications

Emissions	Heating Capacity	Max Burn Time	Efficiency
1.3 g/Kg	Up to 300sqm	Up to 12 Hours	83%
Firebox Size	Max Log Size	Weight	Construction
.085 Cubic Mtr	610mm	267Kg (with legs)	Cast Iron

GREEN START™

AVAILABLE - SEE PAGE 6 FOR DETAILS

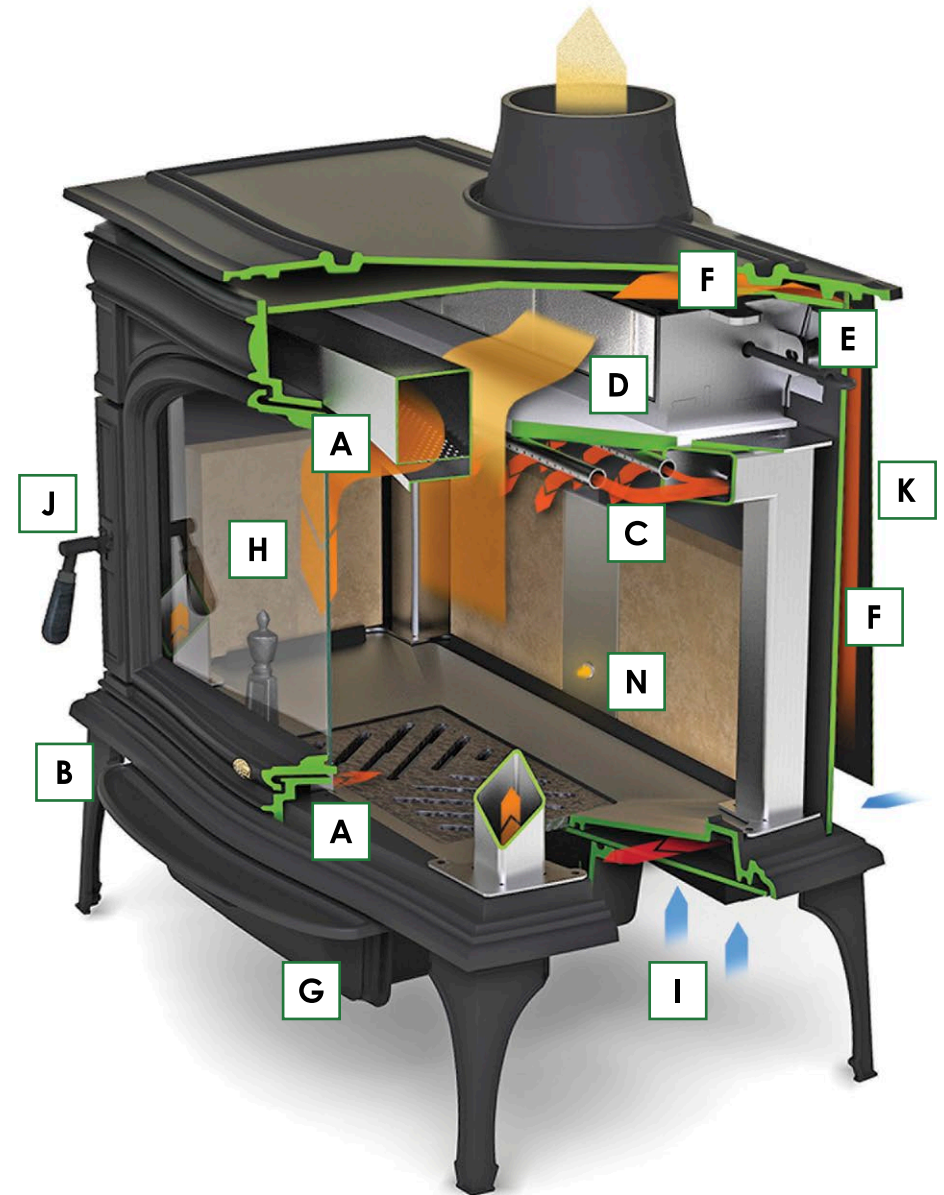
What Is **HYBRID** **FYRE**™ Technology... *It's The Cleanest & Greenest Technology Ever!*

Cape Cod Features

- A** Pre-heated combustion air helps the glass stay clean and the stove burn efficiently.
- B** A single air control regulates the burn rate of the fire making this advanced burner system easy to operate.
- C** Secondary air tubes combined with an insulated baffle slow down the fire and reburn the particulate.
- D** A durable, large post combustor incinerates any left over particulate, burning up to 99.5% of the flue gases and all but eliminating any carbon monoxide.

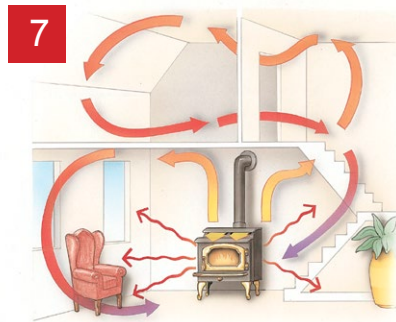
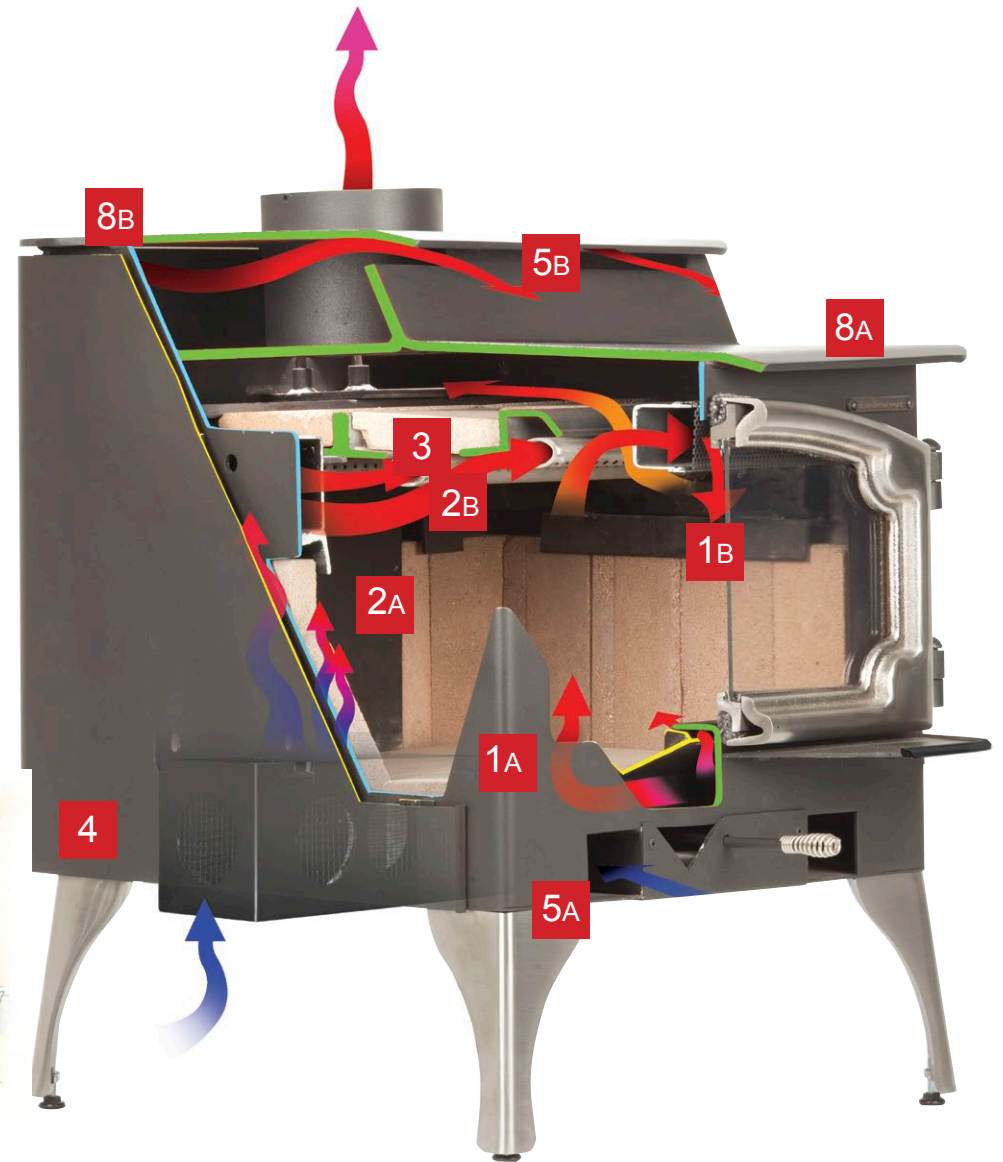
PLUS HIGH HEAT TRANSFER OVER 83% OVERALL EFFICIENCY

- E** Bypass damper allows for smoke free start-ups and reloads when open, and assists overnight burns when closed.
- F** Room air is drawn through the cast iron air convection chamber for maximum heat transfer and efficiency. Hot air is circulated through your room through natural convection.
- G** Easy glide large capacity ash drawer on ball bearing glides.
- H** Large fire viewing door with stay clean ceramic glass.
- I** Outside air connection (concealed).
- J** Adjustable roller bar door handle.
- K** Close rear and side wall clearance to combustibles.



How A Lopi Wood Heater Works

- 1** Pre-heated air wash cleans the glass like a self-cleaning oven; (1A) a steady stream of fresh air enters the heater, gets hot as it is drawn up the heated internal air chamber, and (1B) then travels through a screened airwash which diffuses and evenly distributes air across the glass keeping smoke and ash particles away.
- 2** Pre-heated secondary combustion air (2A) is delivered to the stainless steel secondary combustion tube (2B) which introduces oxygen to the firebox and promotes re-burn of most of the smoke and gases that would otherwise line your flue as creosote and exit your chimney as smoke. *Note: Australian wood stoves only require one air tube.
- 3** The heavy-duty masonry baffle holds and radiates heat back into the firebox for more efficient and complete combustion.
- 4** An optional blower is available to speed up the circulation of convective heat throughout your home. A blower is ideal for quicker more efficient heating, or for larger a home with high ceilings or a home with an open floorplan.
- 5** Convection chamber naturally draws cold room air (5A) in at the bottom of the unit, circulates it around the stove and (5B) returns it to the room heated. As the stove heats up air flow actually increases delivering more heated air into your home.
- 6** Our medium and large units feature By-Pass dampers which temporarily re-routes smoke behind the masonry baffle when engaged. The by-pass assists faster fire start-up as well as preventing smoke from escaping through the door when loading wood.
- 7** Lopi wood heaters feature a large capacity convection chamber which enhances the heat transfer by gently circulating heated air to adjoining rooms, while still offering radiant heat that warms the room and the objects in it.
- 8** Our wood heaters also provide a great cooktop surface. The cooktop surface can be used to warm soup, heat up hot cocoa or for scented potpourri. Our medium and large stoves give you both a cooktop (8A) and warming (8B) surface, so not only will your stove heat your home during a power outage, you can also cook on it.



Authorised Lopi Dealer:



LOPI PRODUCTS ARE
MADE IN THE USA
WITH PRIDE

Proudly Supporting



STEVE WAUGH FOUNDATION
www.stevewaughfoundation.com.au



Distributed in Australia
by Dragon Wholesaling Pty Ltd
Ph. 1800 064 234
www.lopi.com.au

*All Information correct at the time of printing but are subject to change at any time at the discretion of Dragon Wholesaling Pty Ltd. There may be colour differences due to printing variations and photography lighting.

Brochure V0216